



SFMTA
Municipal Transportation Agency

Private Commuter Shuttles in San Francisco

04 | 10 | 2013

SAN FRANCISCO, CALIFORNIA



Background

- **Growth of private shuttle sector**
- **Conflicts, needs, and complaints dealt with ad hoc**
- **Need for consistent, clear, enforceable policies**





Muni Partners Program

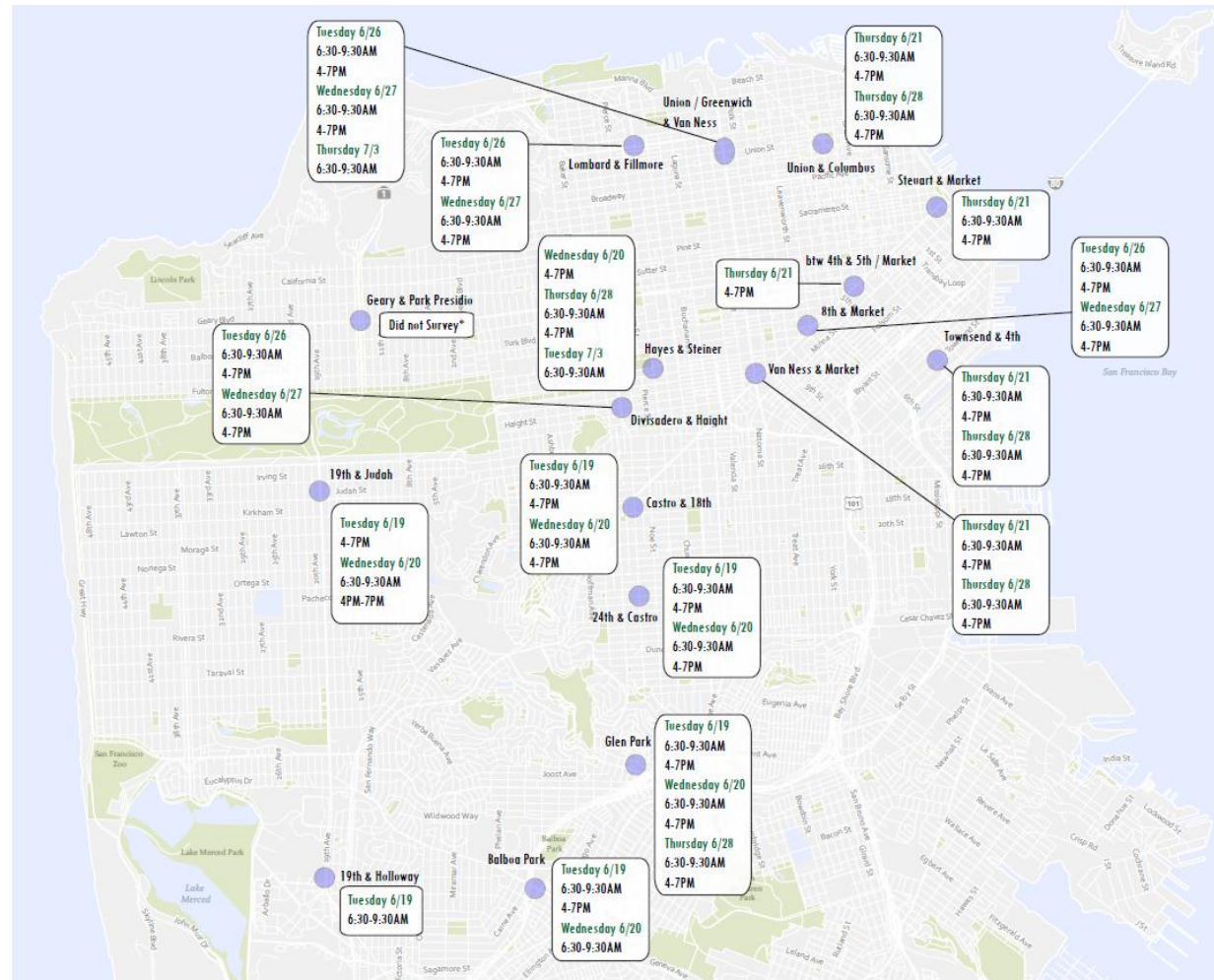
- **Goals:**
 - Better understand private shuttle sector
 - Establish clear curb use policies
 - Create identification system
 - Collaborate with shuttle providers for mutual benefits





Data Collection

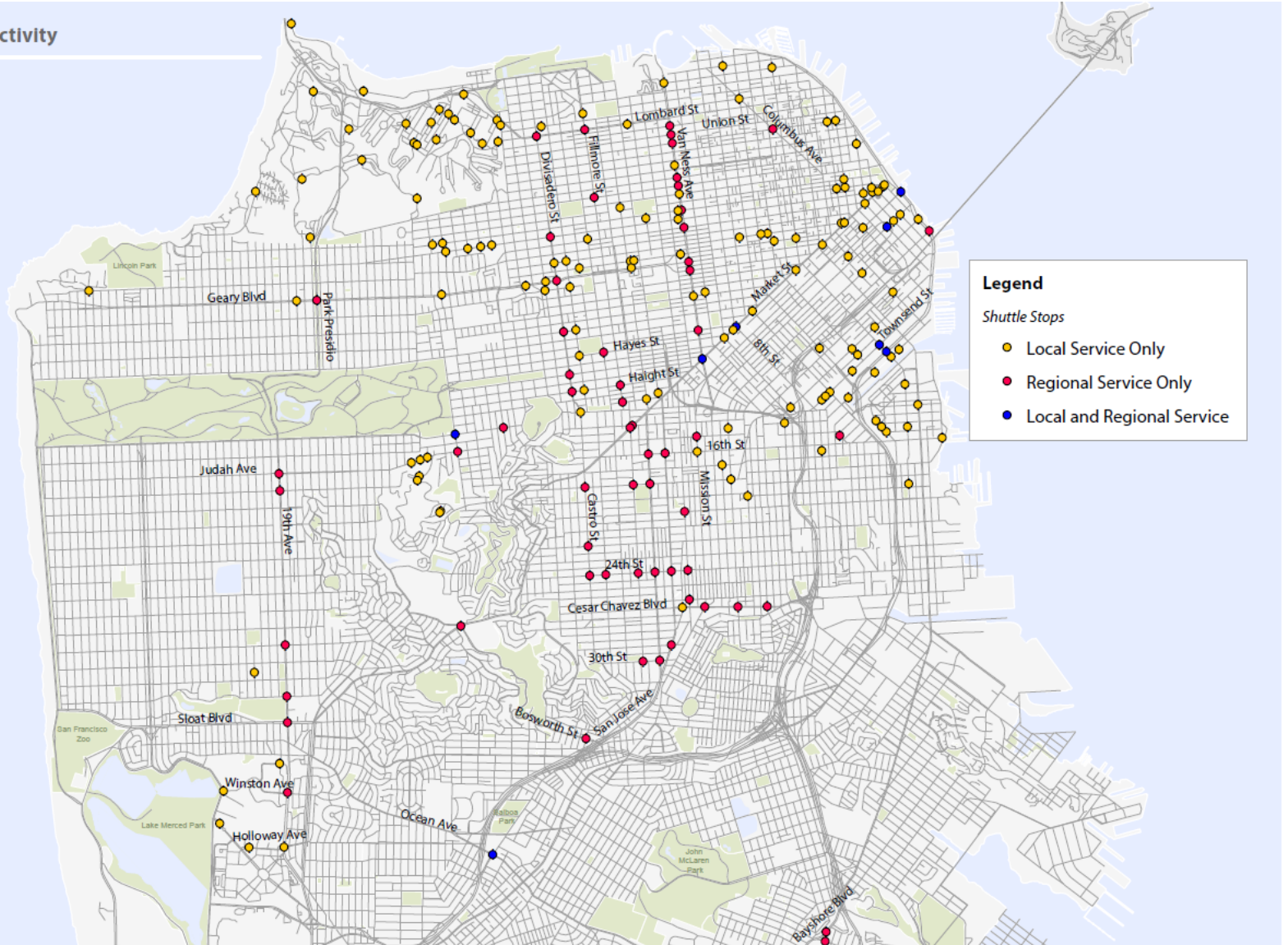
- Shuttle provider inventory
- Shuttle-related communications
- Citywide shuttle activity
- Field data collection
- Shuttle fleet, fuel, and activity profile
- Rider survey





Shuttle Sector: Key Findings

San Francisco Shuttle Activity





Shuttle Sector: Key Findings

- **Confirmed conflicts :**
 - blocking Muni access to stops
 - use of restricted streets
 - blocking traffic and bike lanes





Shuttle Sector: Key Findings

Environmental Benefits (Regional Shuttles)

| Summary of Emissions Impacts | Annual VMT reduced | Annual trips displaced | Annual GHG Emissions (metric tons) |
|------------------------------|----------------------|------------------------|------------------------------------|
| Displaced passenger vehicles | (31,437,089) | (824,288) | (11,700) |
| Impacts of shuttle vehicles | 2,710,788 | 67,065 | 4,951 |
| Net impacts | (28,726,302) | (757,223) | (6,749) |

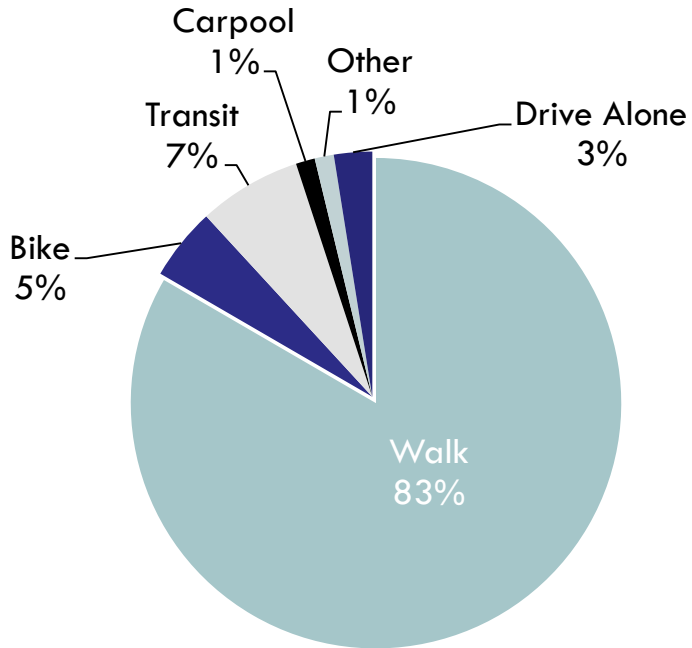
Based on data provided by participating regional shuttle providers.



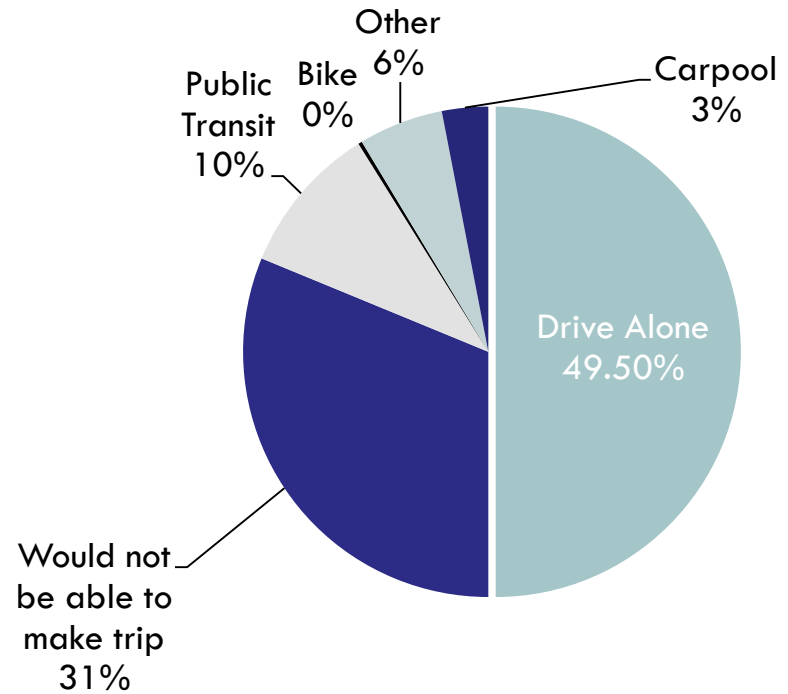
Shuttle Sector: Key Findings

Transportation Implications (Regional Shuttles)

Mode of Shuttle Stop Access



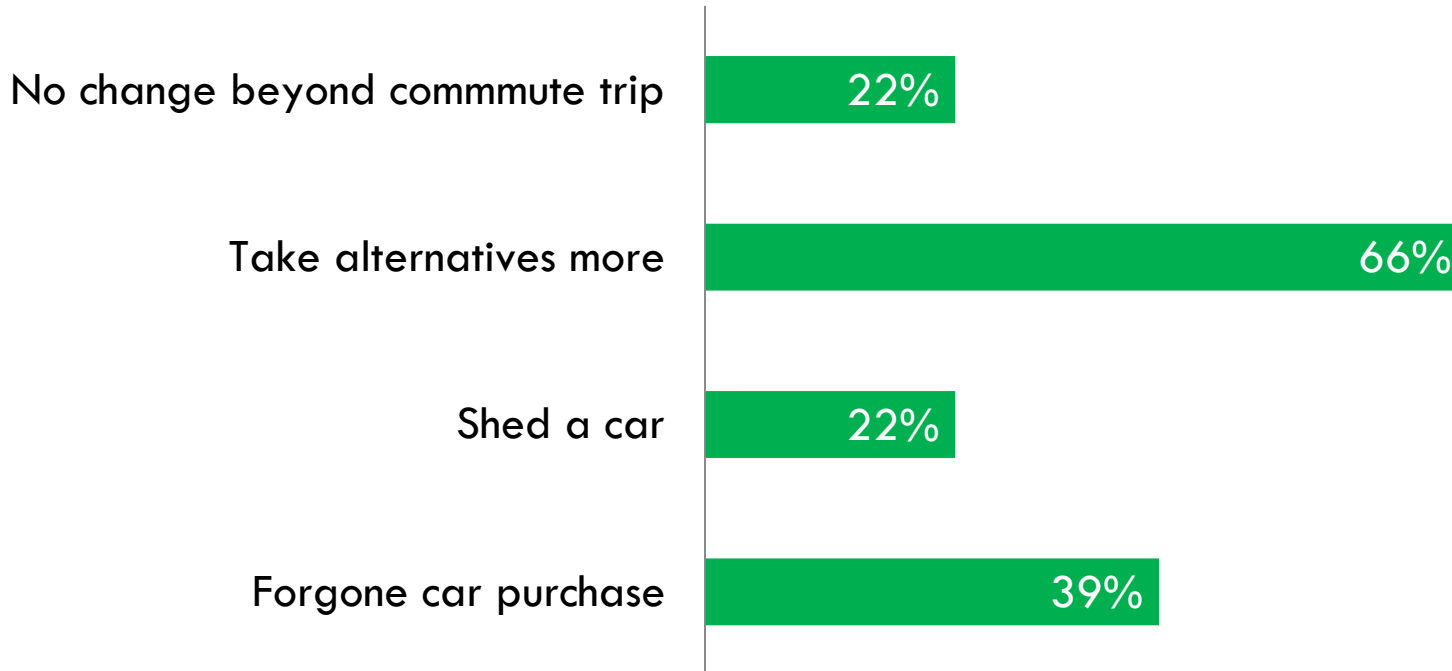
Trip Choice if Shuttle Was Not Available





Shuttle Sector: Key Findings

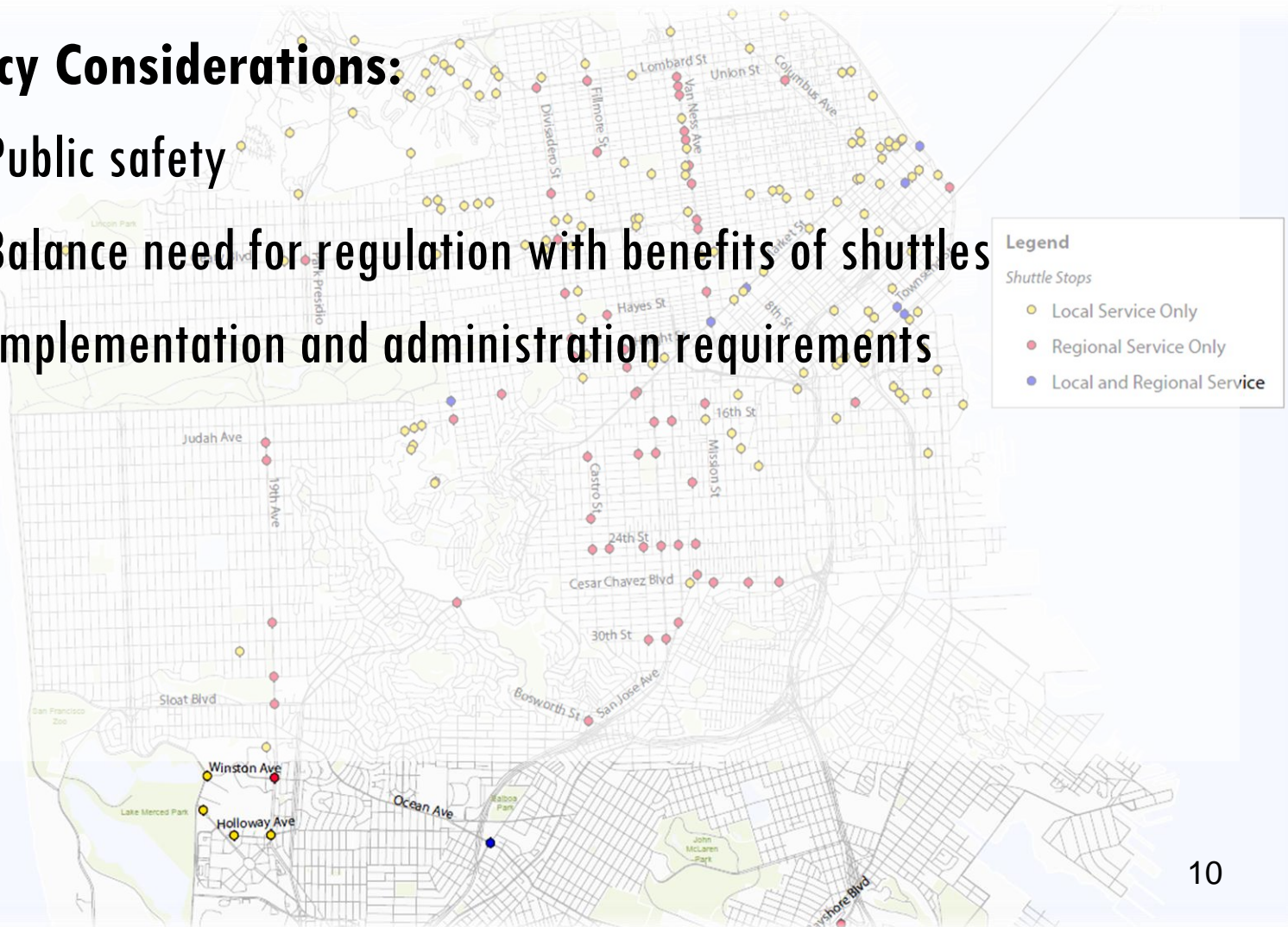
Changes in Travel Patterns: Regional Shuttle Riders





Policy Development

- **Policy Considerations:**
 - Public safety
 - Balance need for regulation with benefits of shuttles
 - Implementation and administration requirements





For more information:

Carli Paine, SFMTA

carli.paine@sfmta.com

415-701-4469